

4

3

2

1

D

D

C

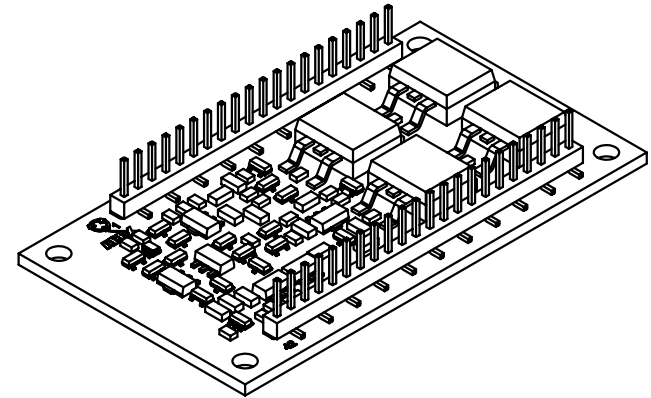
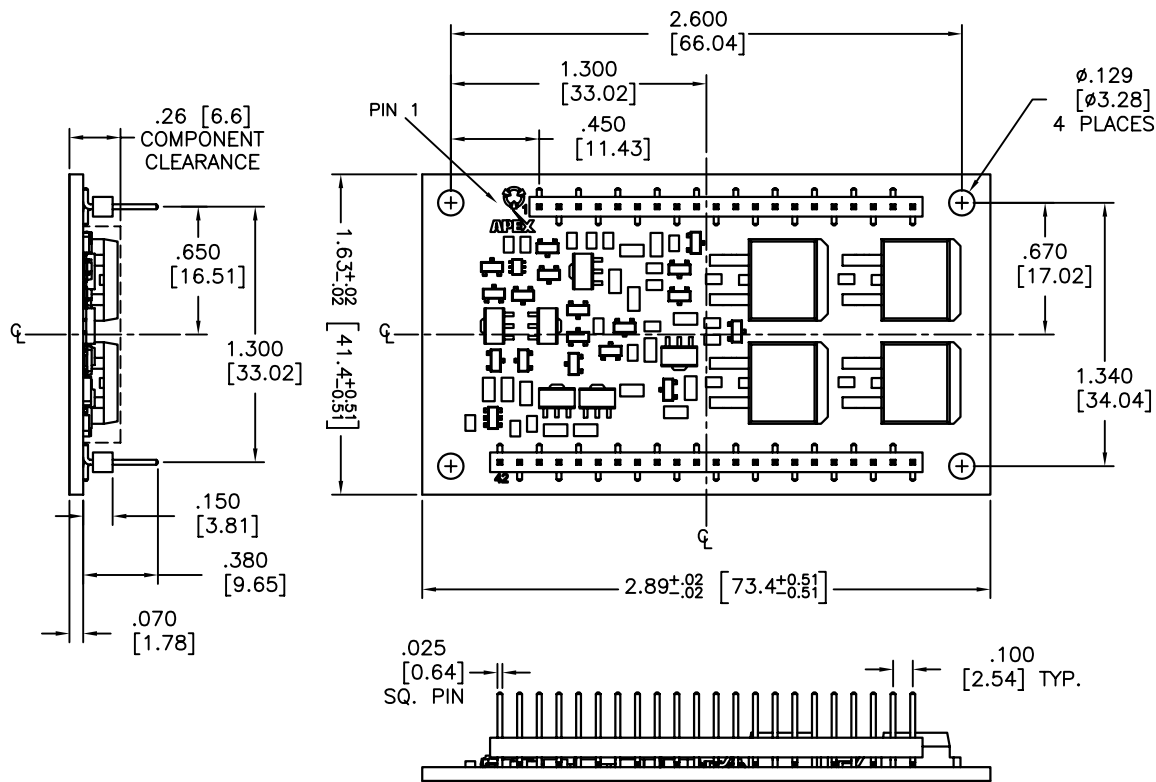
C

B

B


A

A



NOTES:

1. Dimensions are inches; alternate units are [mm].
2. Recommended PCB hole diameter for pins: .050 [1.27].
3. 2oz. copper over 600V dielectric over aluminum substrate.
4. Tin over nickel plated phosphor bronze pins.
5. Package weight:
6. Mount with #4 or equivalent screws.
7. It is not recommended that mounting of the package rely on the pins for mechanical support.

TOLERANCES - UNLESS OTHERWISE SPECIFIED						TITLE MODULAR 42-PIN DIP, 1.3 SPACING			PACKAGE FC	
.XX = ±.01	.XXX = ±.005					SUBJECT MECHANICAL PACKAGE OUTLINE				
ANG. = ±.5°		ENG. CSM	TECH/DRAW. JCA	DCA 50402	SPL. OF 1 1	FILENAME: FC	REV 3	DATE 10/5/05		

4

3

2

1