

4

3

2

1

D

D

C

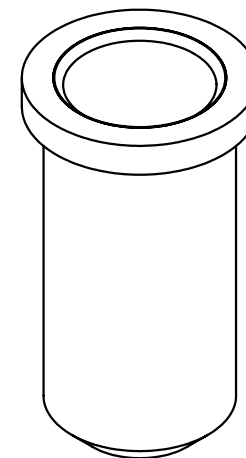
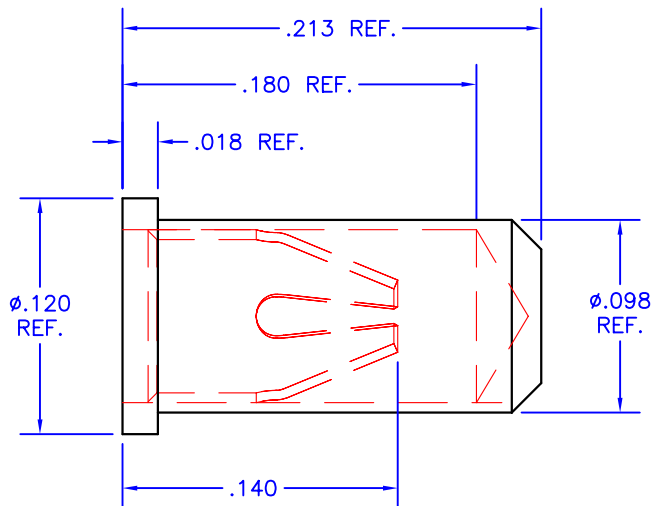
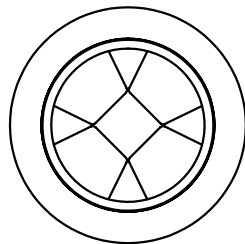
C

B

B

A

A



NOTES:

1. Unless otherwise noted, dimensions are in inches.
2. Shell: 360 brass, half-hard, with 10 µin gold over nickel
3. Contacts: Beryllium copper with 30 µin gold over nickel
4. Current rating: 11.2 amps, for 10°C temperature rise.
5. Solder mount in minimum .100 diameter mounting hole.
6. Mill-Max Part No. 0364-0-15-15-13-27-10-0

TOLERANCES - UNLESS OTHERWISE SPECIFIED	
DIAMETERS: ±.002	
LENGTHS: ±.005	
ANGLES: ±2°	



TITLE PIN RECEPTACLE FOR .048-.064 DIAMETER PINS				PART NO. MS04	
SUBJECT MECHANICAL DRAWING					
ENG: D-M	TECH/DRAW: D-M	DCA 46478	SHL 1	OF 1	FILENAME: MS04-B
REV B		DATE 10/19/04			

4

3

2

1