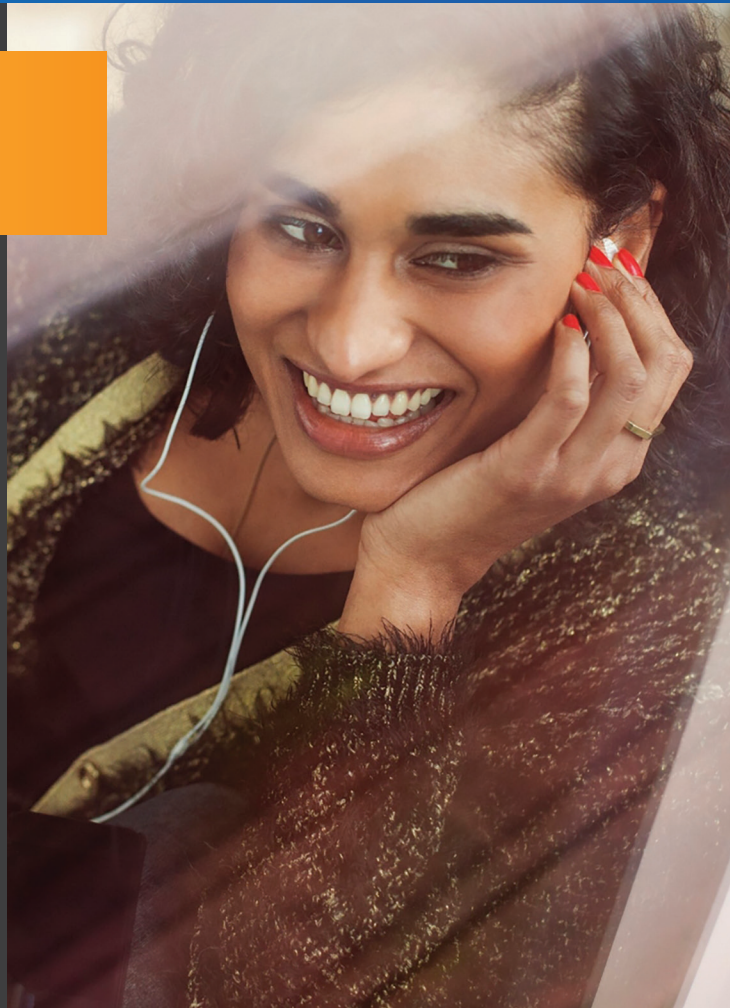


CRD42L42-MFi

MFi Digital Headset Reference Design

The CRD42L42-MFi is a Rapid Development Platform for Lightning Connected Headsets

The MFi Headset Reference Design from Cirrus Logic is a rapid development platform for Lightning® connected digital headsets. It uses the CS42L42 codec to enable a hi-fi audio experience when listening to music or videos or during a phone conversation. The CS42L42 features a 114 dB headphone D/A converter that can deliver up to 35mW stereo, and a 114 dB A/D converter with a low noise microphone bias generator and sidetone mixing to generate clear phone calls. MCU example code shows how to quickly develop a product that complies with MFi requirements. The reference design includes a customer reference design board (CRD) that fits into a compact pendant form factor and a larger customer development board (CDB) with header locations for debug.

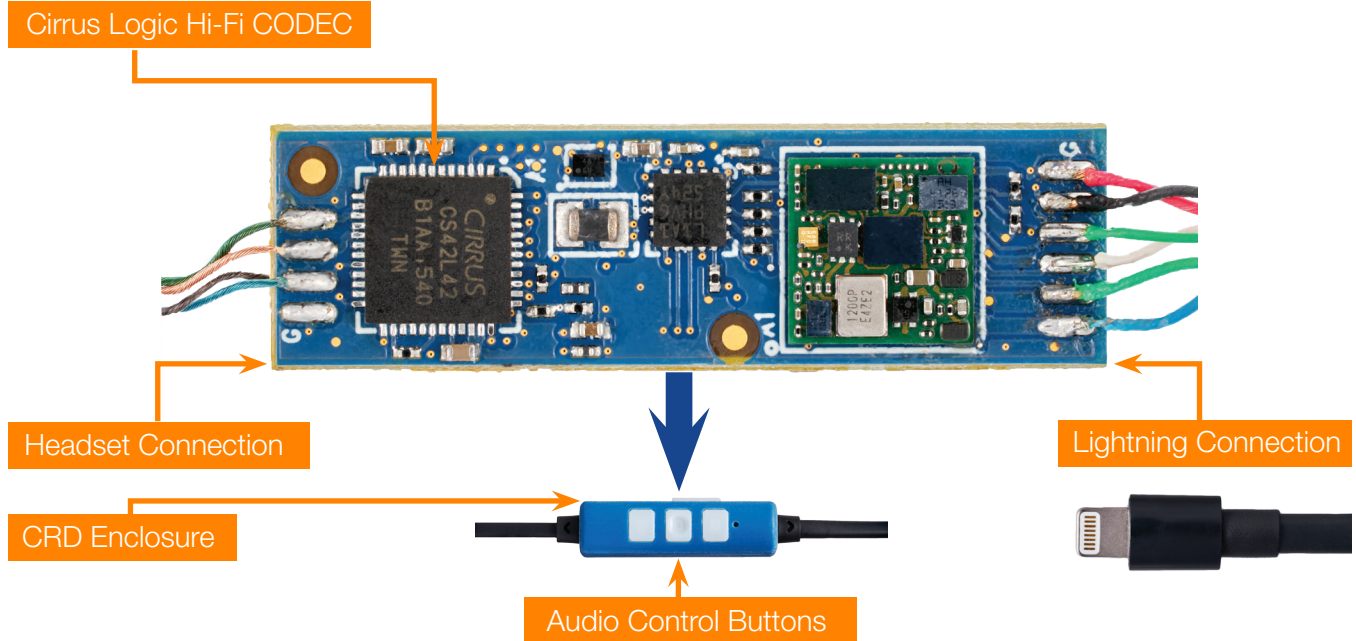


Features

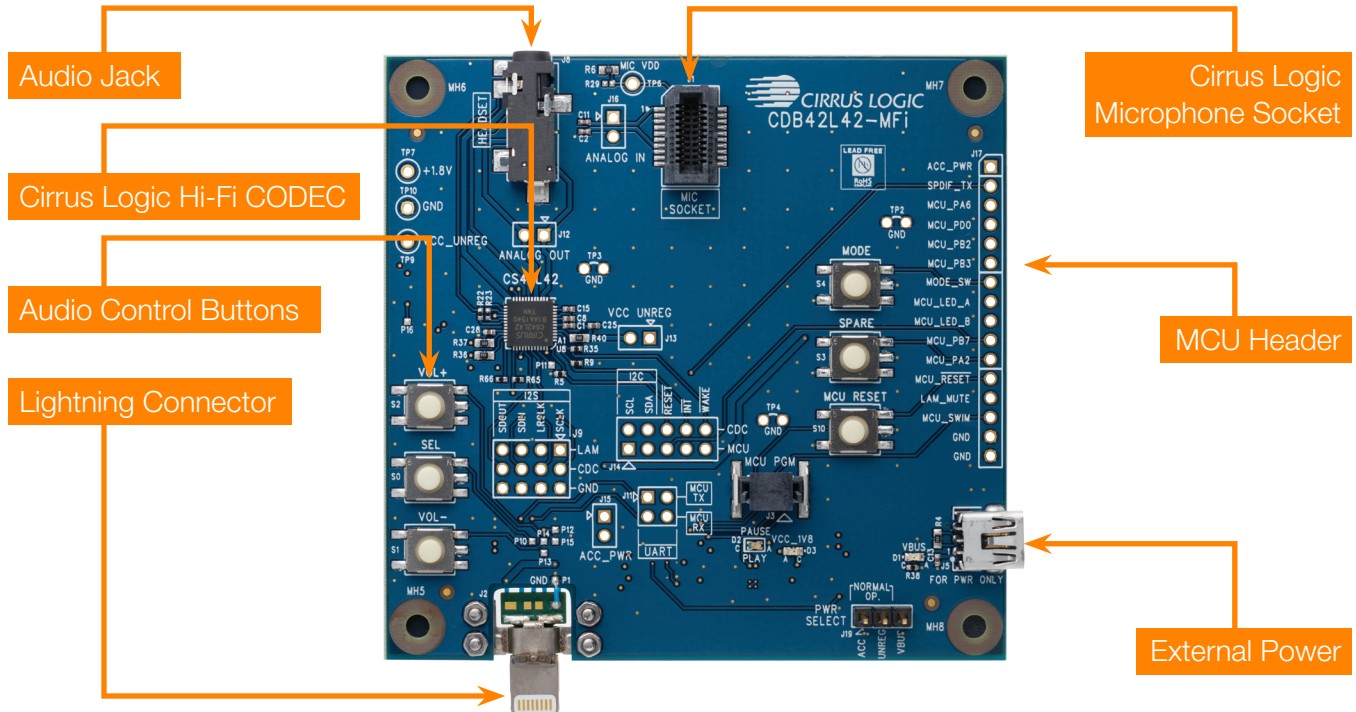
- Hi-Fi 114 dB DAC plus headphone driver
- 114 dB ADC with mic bias generator
- Voice sidetone mixer
- Audio remote control buttons
- Audio jack support
- Example iOS app
- CRD board in compact pendant form factor
- CDB board with debug headers
- Turnkey design collateral and documentation

The CRD42L42 Digital Headset Reference Design is available to MFi licensees. Contact your local Cirrus Logic representative for more information. For information about the Apple® MFi program, visit mfi.apple.com

CRD Board



CDB Board



Cirrus Logic, Inc.
 800 West Sixth Street
 Austin, Texas 78701
 United States
 T+1-512-851-4000
 F+1-512-851-4977

Sales Support
 North America +1-800-888-5016
 Asia Pacific +852 2376-0801
 Japan +81-(3)-5782-8180
 Europe/UK +44-(0)-131-272-7000



www.cirrus.com

JUNE2016

© 2016 Cirrus Logic, Inc. All rights reserved. Cirrus Logic, Cirrus, the Cirrus Logic logo designs, SoundClear and the SoundClear logo design are trademarks of Cirrus Logic, Inc. Other brand and product names in this document may be trademarks or service marks of their respective owners.