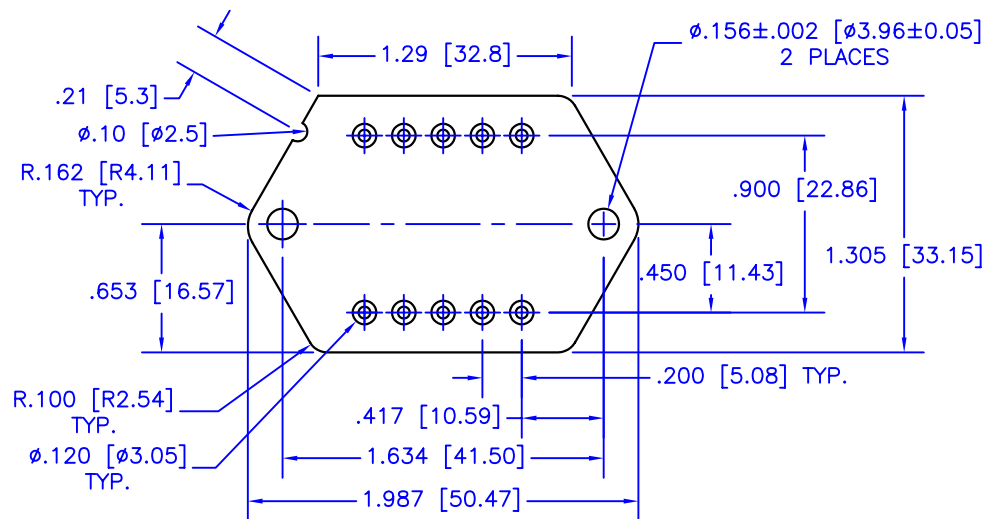
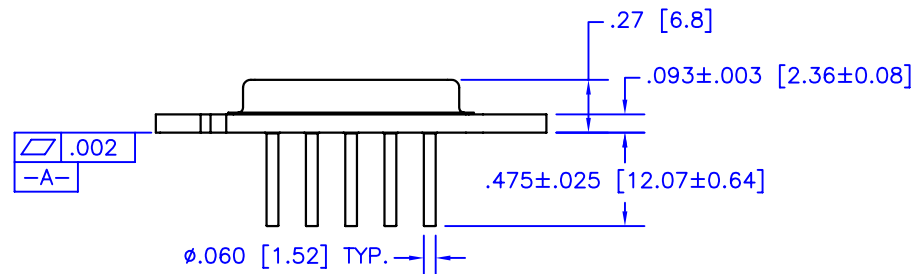
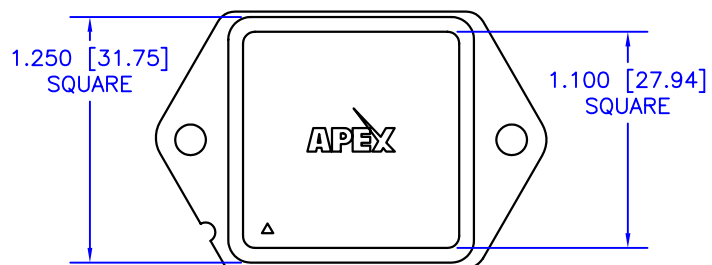
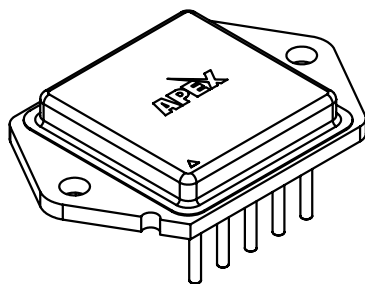


4

3

2

1



NOTES:

1. Dimensions are in inches & [mm].
2. Triangle on lid and notch in header denote pin 1.
3. Header material: Nickel-plated CRS.
4. Lid material: Nickel 200 (99.4% Ni).
5. Pin material: Solderable nickel-plated Alloy 52.
6. Welded hermetic package seal.
7. Isolation: 1000 VDC any pin to case.
8. Package weight: 1.27 oz [36 g]

TOLERANCES - UNLESS OTHERWISE SPECIFIED	
.XX	= ±.01 [.254]
.XXX	= ±.005 [.127]
ANG.	= ±.5°



TITLE		10-PIN POWER DIP, 60-MIL PIN			PACKAGE		DE	
SUBJECT		MECHANICAL PACKAGE OUTLINE						
ENG.	TECH/DRAWN	DCA	SH.	OF	FILENAME:	REV	DATE	
D-M	P.ECK	50301	1	1	DE	B	11AUG05	

4

3

2

1