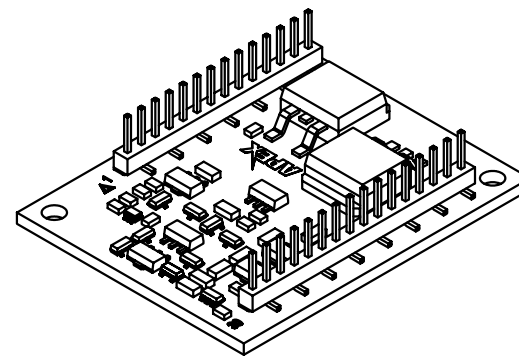
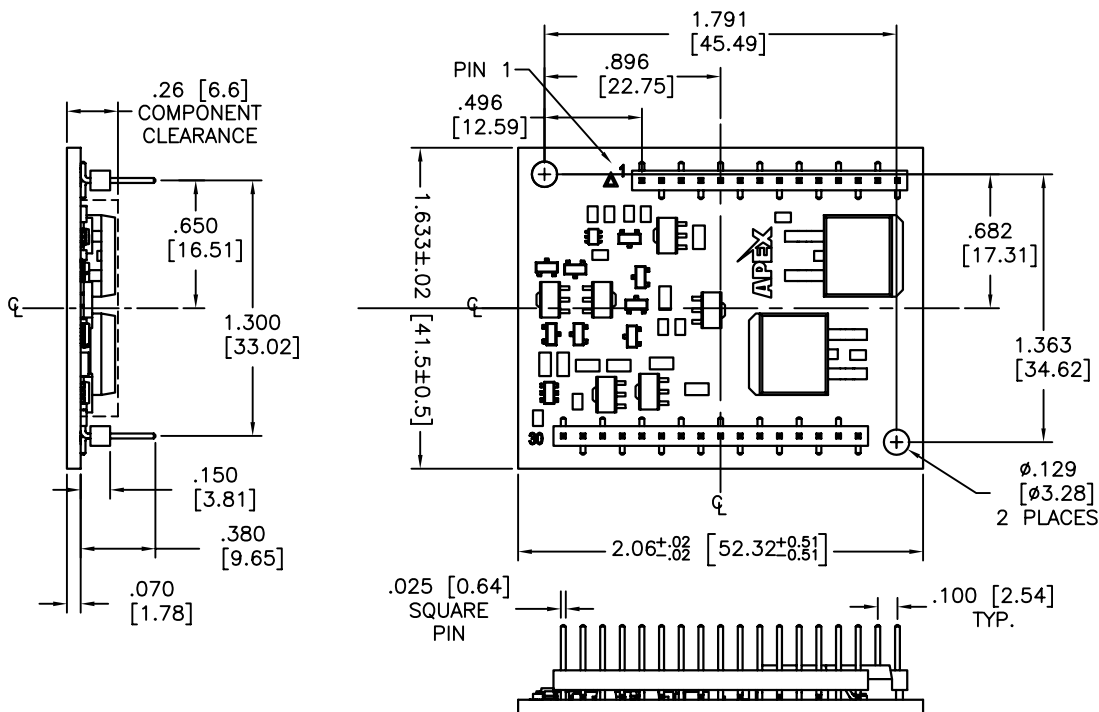


4

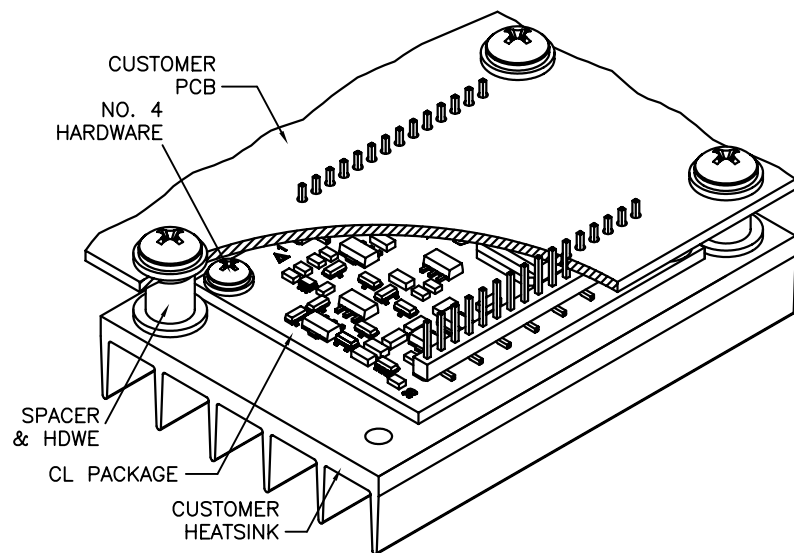
3

2

1



SUGGESTED MOUNTING METHOD



NOTES:

- Dimensions are inches; alternate units are [mm].
- Recommended PCB hole diameter for pins: .050"
- 2 oz. copper over 600V dielectric over aluminum substrate
- Tin-nickel plated phosphor bronze pins
- Package weight: 0.56 oz. [15.9 g]
- Mount with #4 or equivalent screws.
- It is not recommended that mounting of the package rely on the pins for mechanical support. The mounting method shown does not represent a specific design solution or the only way to mount the package.
- Care must be exercised in designing the mating board, to avoid interference among board components.

TOLERANCES - UNLESS OTHERWISE SPECIFIED

.XX = ±.01
.XXX = ±.005
ANG. = ±.5°

APEX
MICROTECHNOLOGY

TITLE
MODULAR 30-PIN DIP, 1.3 SPACING

SUBJECT
MECHANICAL PACKAGE OUTLINE

ENG: D-M TECH/DRAW: JCA DCA: 50400 SH: 1 OF 1 FILENAME: CL

MODEL
CL

REV: B DATE: 10/25/05

4

3

2

1