

# Evaluation Kit for the PA107

## INTRODUCTION

The EK71 Evaluation kit is designed to provide a convenient way to breadboard and evaluate design ideas for the PA107 power operational amplifier. The evaluation board is pre-wired for all required external components. The evaluation board has been laid out and labeled to easily configure the high voltage operational amplifier in an inverting configuration. However, the evaluation board is flexible enough to analyze a multitude of standard or proprietary circuit configurations. Components not usually readily available in engineering labs are provided. External connection to the evaluation kit can be made via the terminal connectors at the edge of the circuit board. These connectors are suitable for standard banana plugs. The schematic is shown in Figure 1.

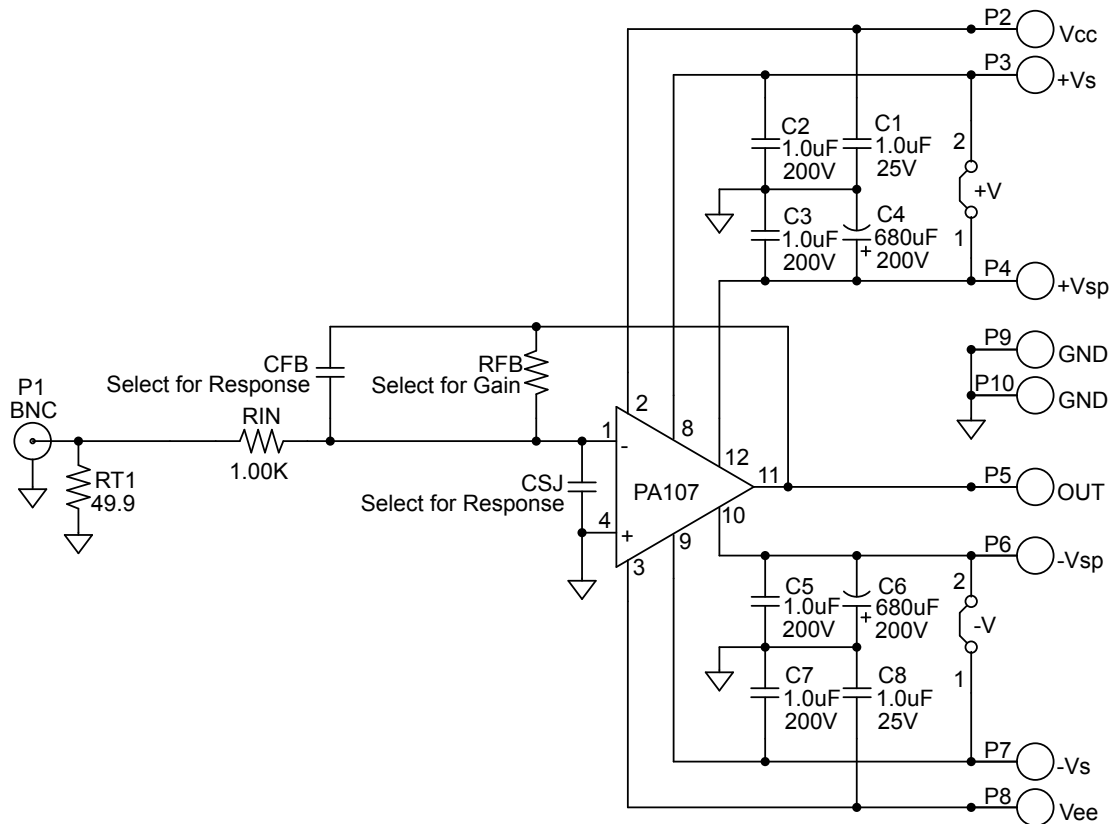


FIGURE 1 – EK71 Schematic

## PARTS LIST

Part #	Description, Vendor	Quantity
146510CJ	Connector, BNC, PCB Mount	1
571-0100	4mm Black PCB Socket Single	9
EC03	Capacitor, 680 $\mu$ F	2
EVAL71	PC Board	1
HS20	Heatsink	1
MS06	Mating Socket	1
OX7R105KWN	Cap, 1 $\mu$ F	4
TW07	Thermal Washer, PSIP	1

## BEFORE YOU GET STARTED

- Please read this data sheet in its entirety before starting to construct your evaluation board.
- All Apex Precision Power amplifiers should be handled using proper ESD precautions.
- Do not change connections while the circuit is powered.
- Initially set all power supplies to the minimum operating voltage allowed in the device data sheet.
- Always use adequate power supply bypass capacitors, Apex Precision Power recommends 1 $\mu$ F ceramic in parallel with at least 10 $\mu$ F per ampere of output current electrolytic/tantalum.
- Always provide the adequate heat sinking. Power dissipation must be considered to ensure maximum junction temperature is not exceeded.

## ASSEMBLY

1. See Figure 1 and Figure 2. Solder the surface mount ceramic capacitors to the DUT side of the circuit board at C2, C7, C5 and C3.
2. C1 and C8 are user supplied pin-through-hole bypass capacitors for Vcc and Vee respectively. Insert C1 and C8 from the component side and solder from the circuit side.
3. Solder the electrolytic capacitors to the circuit board at C4 and C6. Match the polarity markings on the circuit board with those on the capacitor body.
4. Clip off the mating socket strip after the 12th position. Insert the strip into the circuit board from the DUT side and solder one pin on the reverse side. Check that the mating socket strip is fully seated against the circuit board then solder the remaining pins. Insert the amplifier fully into the mating socket strip, noting the pin 1 locations on the amplifier and the circuit board.
5. Examine the large heat sink. Notice that there are several holes in the face of the heat sink. These are for mounting various Apex Precision Power amplifier models. The circuit board aligns the amplifier with the correct mounting hole once the heat sink is attached to the circuit board.
6. The four holes at the corners of the circuit board are for mounting #6 standoff spacers if desired. The remaining two slotted holes are for mounting the large heat sink to the DUT side of the circuit board. Temporarily mount the heat sink with 2 #6 x 1/2" self tapping screws from the opposite side of the circuit board. Do not fully tighten the screws at this time. Check for alignment of the slot in the mounting tab of the amplifier with a hole in the heat sink. Dismount and rotate the heat sink if necessary to achieve an alignment with a hole in the heat sink. Position the heat sink so that the back of the amplifier mounting tab is flush with the heat sink then tighten the heat sink mounting screws.
7. Hang the thermal washer near the end of a 6-32 x 1/2" screw. Slightly pull the amplifier away from the heat sink face. Use the screw to position the thermal washer behind the amplifier and insert the screw into the mounting hole of the heat sink. Secure the screw from the opposite side of the heat sink using a nut holder.
8. To select the values of feedback resistor (RFB), feedback capacitor (CFB) and summing junction capacitor (CSJ), please refer to the section titled "FEEDBACK CONSIDERATIONS" in the PA107DP data sheet.
9. Add other components as necessary to complete your application circuit.

**FIGURE 2 - EK71 Assembly**

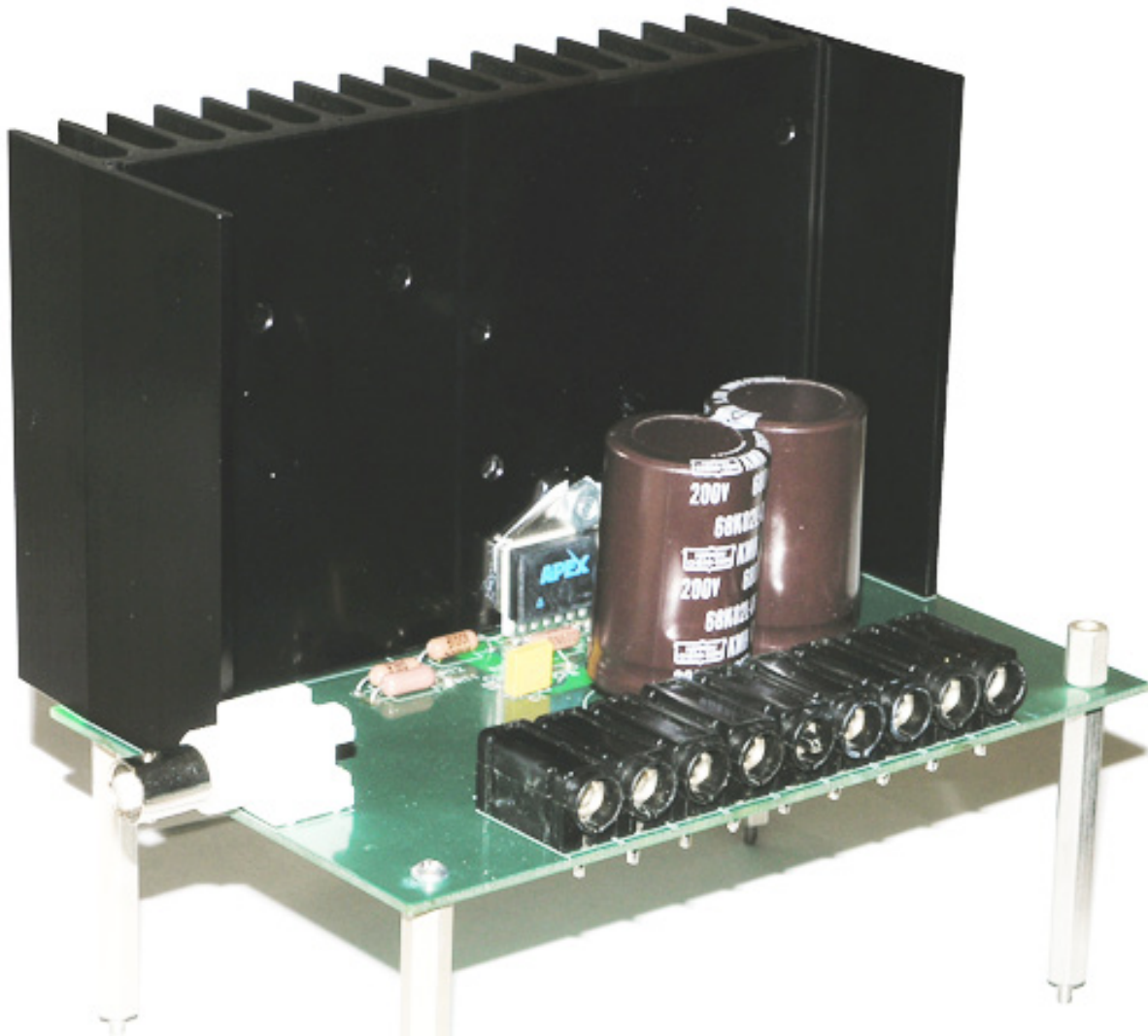
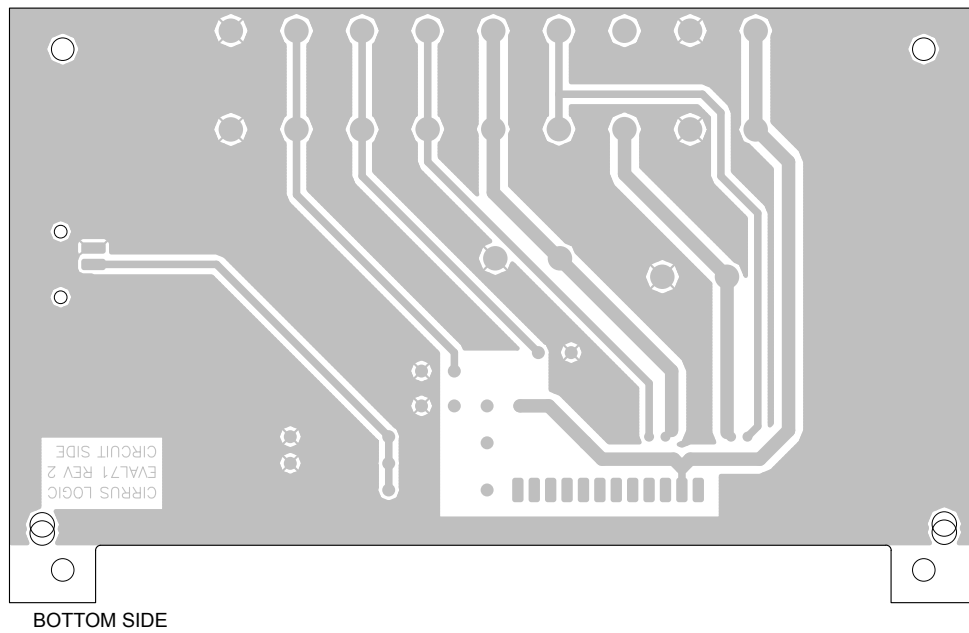
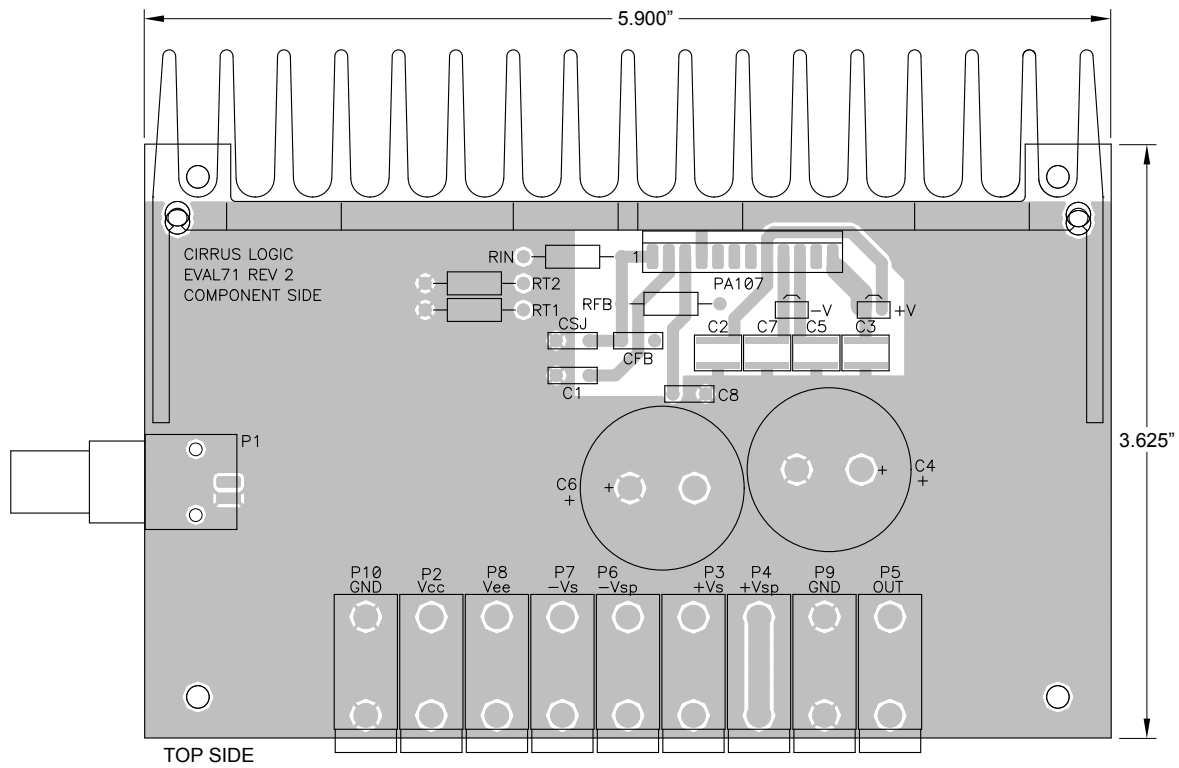


FIGURE 3 – EVAL71 PCB Layout





---

## CONTACTING CIRRUS LOGIC SUPPORT

For all Apex Precision Power product questions and inquiries, call toll free 800-546-2739 in North America.

For inquiries via email, please contact [apex.support@cirrus.com](mailto:apex.support@cirrus.com).

International customers can also request support by contacting their local Cirrus Logic Sales Representative.

To find the one nearest to you, go to [www.cirrus.com](http://www.cirrus.com)

---

### IMPORTANT NOTICE

Cirrus Logic, Inc. and its subsidiaries ("Cirrus") believe that the information contained in this document is accurate and reliable. However, the information is subject to change without notice and is provided "AS IS" without warranty of any kind (express or implied). Customers are advised to obtain the latest version of relevant information to verify, before placing orders, that information being relied on is current and complete. All products are sold subject to the terms and conditions of sale supplied at the time of order acknowledgment, including those pertaining to warranty, indemnification, and limitation of liability. No responsibility is assumed by Cirrus for the use of this information, including use of this information as the basis for manufacture or sale of any items, or for infringement of patents or other rights of third parties. This document is the property of Cirrus and by furnishing this information, Cirrus grants no license, express or implied under any patents, mask work rights, copyrights, trademarks, trade secrets or other intellectual property rights. Cirrus owns the copyrights associated with the information contained herein and gives consent for copies to be made of the information only for use within your organization with respect to Cirrus integrated circuits or other products of Cirrus. This consent does not extend to other copying such as copying for general distribution, advertising or promotional purposes, or for creating any work for resale.

CERTAIN APPLICATIONS USING SEMICONDUCTOR PRODUCTS MAY INVOLVE POTENTIAL RISKS OF DEATH, PERSONAL INJURY, OR SEVERE PROPERTY OR ENVIRONMENTAL DAMAGE ("CRITICAL APPLICATIONS"). CIRRUS PRODUCTS ARE NOT DESIGNED, AUTHORIZED OR WARRANTED TO BE SUITABLE FOR USE IN PRODUCTS SURGICALLY IMPLANTED INTO THE BODY, AUTOMOTIVE SAFETY OR SECURITY DEVICES, LIFE SUPPORT PRODUCTS OR OTHER CRITICAL APPLICATIONS. INCLUSION OF CIRRUS PRODUCTS IN SUCH APPLICATIONS IS UNDERSTOOD TO BE FULLY AT THE CUSTOMER'S RISK AND CIRRUS DISCLAIMS AND MAKES NO WARRANTY, EXPRESS, STATUTORY OR IMPLIED, INCLUDING THE IMPLIED WARRANTIES OF MERCHANTABILITY AND FITNESS FOR PARTICULAR PURPOSE, WITH REGARD TO ANY CIRRUS PRODUCT THAT IS USED IN SUCH A MANNER. IF THE CUSTOMER OR CUSTOMER'S CUSTOMER USES OR PERMITS THE USE OF CIRRUS PRODUCTS IN CRITICAL APPLICATIONS, CUSTOMER AGREES, BY SUCH USE, TO FULLY INDEMNIFY CIRRUS, ITS OFFICERS, DIRECTORS, EMPLOYEES, DISTRIBUTORS AND OTHER AGENTS FROM ANY AND ALL LIABILITY, INCLUDING ATTORNEYS' FEES AND COSTS, THAT MAY RESULT FROM OR ARISE IN CONNECTION WITH THESE USES.

Cirrus Logic, Cirrus, and the Cirrus Logic logo designs, Apex Precision Power, Apex and the Apex Precision Power logo designs are trademarks of Cirrus Logic, Inc. All other brand and product names in this document may be trademarks or service marks of their respective owners.