

4

3

2

1

D

D

C

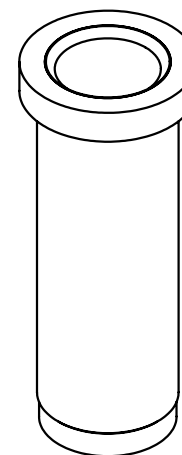
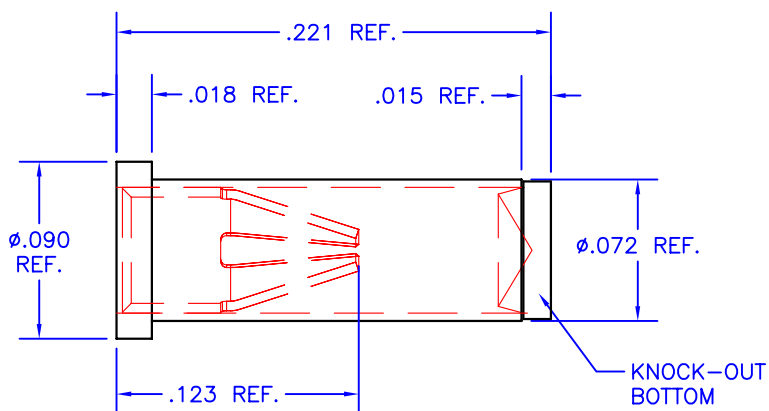
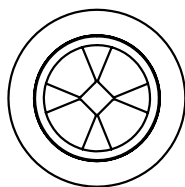
C

B

B

A

A



NOTES:

1. Unless otherwise noted, dimensions are in inches.
2. Shell: 360 brass, half-hard, with 10 μ m gold over nickel
3. Contacts: Beryllium copper with 30 μ m gold over nickel
4. Current rating: 8 amps, for 10°C temperature rise.
5. Solder mount in minimum .075 diameter mounting hole.
6. Mill-Max Part No. 0329-0-15-15-34-27-10-0

TOLERANCES - UNLESS OTHERWISE SPECIFIED	
DIAMETERS: \pm .002	
LENGTHS: \pm .005	
ANGLES: \pm 2°	



TITLE				PART NO.			
PIN RECEPTACLE				MS02			
FOR .032-.046 DIAMETER PINS							
SUBJECT							
MECHANICAL DRAWING							
ENG:	TECH/DWN:	DCA	SHL	OF	FILENAME:	REV	DATE
D-M	D-M	46478	1	1	MS02-B	B	10/19/04

4

3

2

1