

Replacing the LH0101 with the APEX PA02

BACKGROUND

In 1985, Apex Precision Power first addressed inquiries on how the PA02 could be used to second source the LH0101. Now, because of Apex Precision Power's commitment to continue production of the PA02, it is the part of choice for most new designs. For retrofit situations, the PA02 can be substituted for the LH0101 without requiring a PC layout change.

COMPARING THE LH0101 AND THE PA02

The PA02 can satisfy the majority of applications now using the 0101, and can often do it with improved frequency response, linearity and distortion. The table below and the notes that follow compare the two devices.

KEY SPECIFICATION COMPARISON

	LH0101 K	LH0101 AK	LH0101 CK	LH0101 ACK	PA02	PA02A	PA02M	Units
V _{OS} , Initial	10	3	10	3	10	3	10	mV
V _{OS} , vs. Temp	15	7	15	7	13	5.5	15	mV
Bias Current, Initial	1000	300	1000	300	200	100	200	pA
Offset Current, Initial	250	75	250	75	100	50	100	pA
Temp Range	-55/+125	-55/+125	-25/+85	-25/+85	-25/+85	-55/+125	-55/+125	°C
Power Bandwidth	300	300	300	300	350	350	350	kHz
Slew Rate (minimum)	N/A	7.5	N/A	7.5	13	13	13	V/μs
Distortion @ 0.5w, 1 kHz, 10 ohms (typical)	0.008	0.008	0.008	0.008	0.004	0.004	0.004	%

Note: The LH0101 is rated from ±5V to ±22V. The PA02 is rated from ±7V to ±19V. Do not use the PA02 below ±7V (14V total) or above ±19V (38V total).

PIN-OUT COMPARISON

LH0101 Function	Pin No.	PA02 Function
SC+	1	RCL+
V+	2	+V _S
Feedback	3	Out
(Note 1)	4	Out
-IN	5	-IN
+IN	6	+IN
V-	7	-V _S
SC-	8	RCL-
Out	Case	Isolated

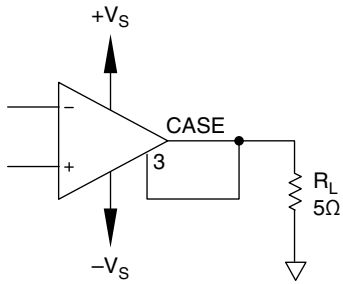


NOTE 1: MAY BE "OUT" OR "N/C", DEPENDING ON DATA SHEET REVISION

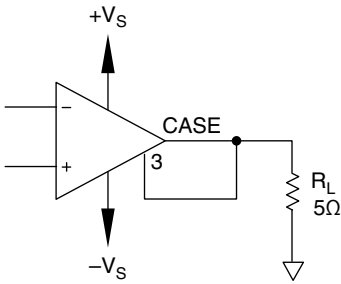
The PA02 can often drop into the LH0101 socket and improve performance in the areas noted above. This "drop in" status applies when the LH0101 does not employ the swing enhancement network. More simply stated, where Pin No. 3 is tied directly to the output (i.e., the case), the 0101 and PA02 are often interchangeable. For circuits which do employ the swing enhancement, one resistor should be removed and another replaced with a jumper. This retrofit saves parts and assembly cost and improves circuit efficiency by eliminating the drop across each of the two resistors. In both cases, the case of the PA02 is tied to the output. This is acceptable.

“DROP IN” EXAMPLE

LH0101

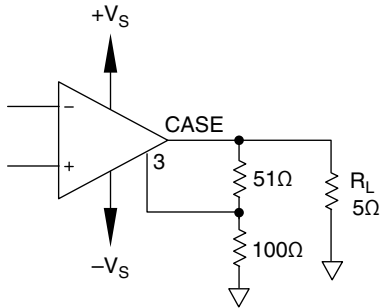


PA02

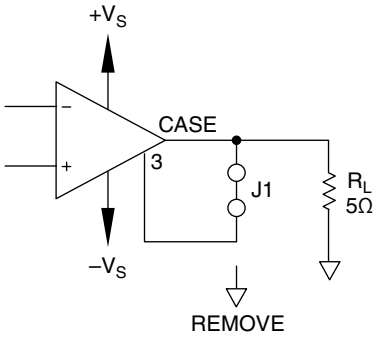


MODIFICATION EXAMPLE

LH0101



PA02



QUESTIONS?

If you have questions, or would like further assistance converting your design to the PA02, please call the Apex Precision Power Applications Design Support Request at (800) 625-4084.



CONTACTING CIRRUS LOGIC SUPPORT

For all Apex Precision Power product questions and inquiries, call toll free 800-546-2739 in North America.

For inquiries via email, please contact apex.support@cirrus.com.

International customers can also request support by contacting their local Cirrus Logic Sales Representative.

To find the one nearest to you, go to www.cirrus.com

IMPORTANT NOTICE

Cirrus Logic, Inc. and its subsidiaries ("Cirrus") believe that the information contained in this document is accurate and reliable. However, the information is subject to change without notice and is provided "AS IS" without warranty of any kind (express or implied). Customers are advised to obtain the latest version of relevant information to verify, before placing orders, that information being relied on is current and complete. All products are sold subject to the terms and conditions of sale supplied at the time of order acknowledgment, including those pertaining to warranty, indemnification, and limitation of liability. No responsibility is assumed by Cirrus for the use of this information, including use of this information as the basis for manufacture or sale of any items, or for infringement of patents or other rights of third parties. This document is the property of Cirrus and by furnishing this information, Cirrus grants no license, express or implied under any patents, mask work rights, copyrights, trademarks, trade secrets or other intellectual property rights. Cirrus owns the copyrights associated with the information contained herein and gives consent for copies to be made of the information only for use within your organization with respect to Cirrus integrated circuits or other products of Cirrus. This consent does not extend to other copying such as copying for general distribution, advertising or promotional purposes, or for creating any work for resale.

CERTAIN APPLICATIONS USING SEMICONDUCTOR PRODUCTS MAY INVOLVE POTENTIAL RISKS OF DEATH, PERSONAL INJURY, OR SEVERE PROPERTY OR ENVIRONMENTAL DAMAGE ("CRITICAL APPLICATIONS"). CIRRUS PRODUCTS ARE NOT DESIGNED, AUTHORIZED OR WARRANTED TO BE SUITABLE FOR USE IN PRODUCTS SURGICALLY IMPLANTED INTO THE BODY, AUTOMOTIVE SAFETY OR SECURITY DEVICES, LIFE SUPPORT PRODUCTS OR OTHER CRITICAL APPLICATIONS. INCLUSION OF CIRRUS PRODUCTS IN SUCH APPLICATIONS IS UNDERSTOOD TO BE FULLY AT THE CUSTOMER'S RISK AND CIRRUS DISCLAIMS AND MAKES NO WARRANTY, EXPRESS, STATUTORY OR IMPLIED, INCLUDING THE IMPLIED WARRANTIES OF MERCHANTABILITY AND FITNESS FOR PARTICULAR PURPOSE, WITH REGARD TO ANY CIRRUS PRODUCT THAT IS USED IN SUCH A MANNER. IF THE CUSTOMER OR CUSTOMER'S CUSTOMER USES OR PERMITS THE USE OF CIRRUS PRODUCTS IN CRITICAL APPLICATIONS, CUSTOMER AGREES, BY SUCH USE, TO FULLY INDEMNIFY CIRRUS, ITS OFFICERS, DIRECTORS, EMPLOYEES, DISTRIBUTORS AND OTHER AGENTS FROM ANY AND ALL LIABILITY, INCLUDING ATTORNEYS' FEES AND COSTS, THAT MAY RESULT FROM OR ARISE IN CONNECTION WITH THESE USES.

Cirrus Logic, Cirrus, and the Cirrus Logic logo designs, Apex Precision Power, Apex and the Apex Precision Power logo designs are trademarks of Cirrus Logic, Inc. All other brand and product names in this document may be trademarks or service marks of their respective owners.
